

MELUXINA

HIGH PERFORMANCE
COMPUTING IN LUXEMBOURG



LuxProvide

KEY PARAMETERS

- Under the governance of the Ministry of State and the Ministry of Economy
- 100% subsidiary of LuxConnect
- Founded in July 2019
- Headquartered in Bissen

WHY

We exist to contribute to Luxembourg's ambition as a digital front runner through helping customers in Luxembourg and beyond grasp the opportunities of the 21st century data economy.

MISSION

Empowering our digital future together

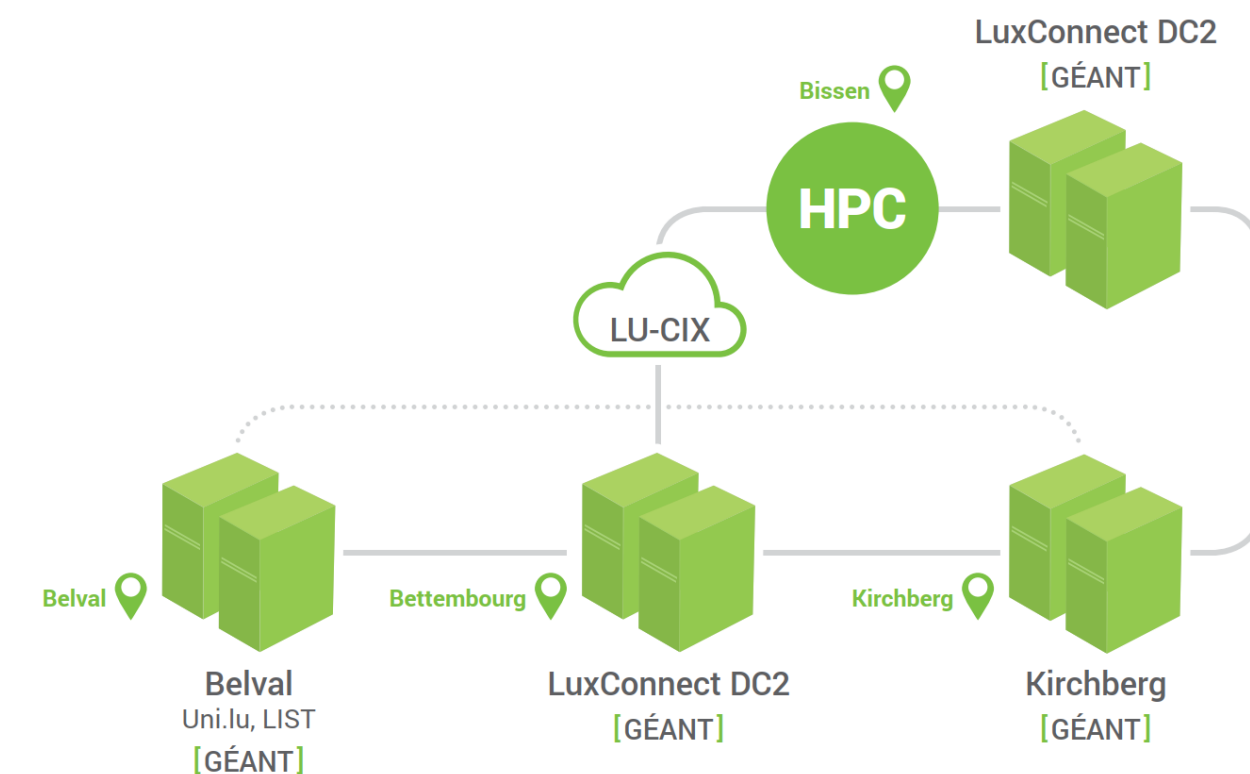
Data Center DC2 in Bissen: State-of-the-art infrastructure for MeluXina

- 100 % green electricity & cooling supplied from Kiowatt
- Free Cooling below 11°C outside temperature
- Low PUE of 1,3 constantly measured and monitored
- ISO27001 Security management certification



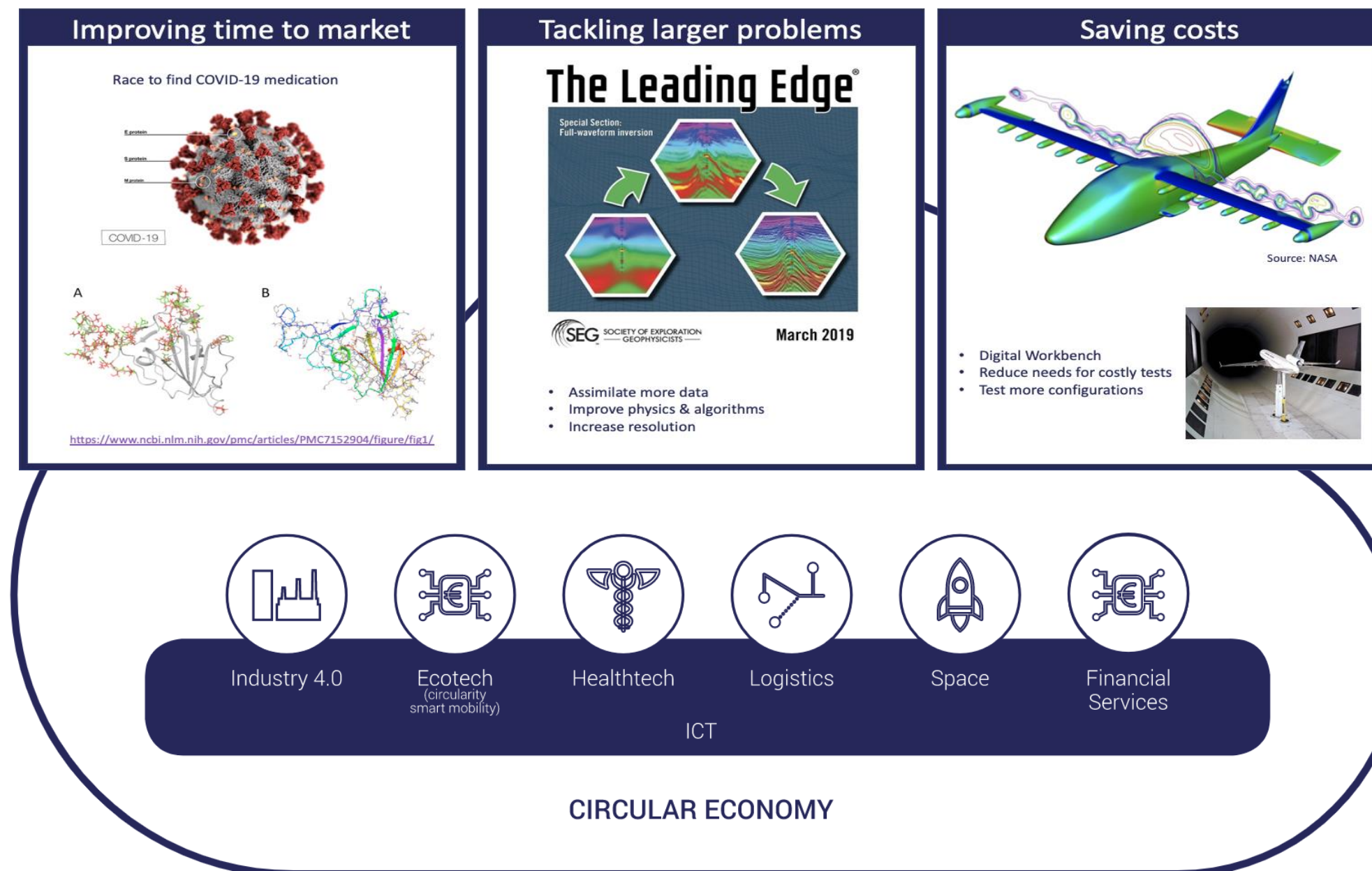
Luxembourg, “fiber rich” country in the heart of Europe

- Over 1.700 km of optical fiber cables deployed on the territory of Luxembourg
- 20 breakouts to the neighbouring countries
- Very short latencies to international internet hubs
- Integration of MeluXina into the European GEANT network

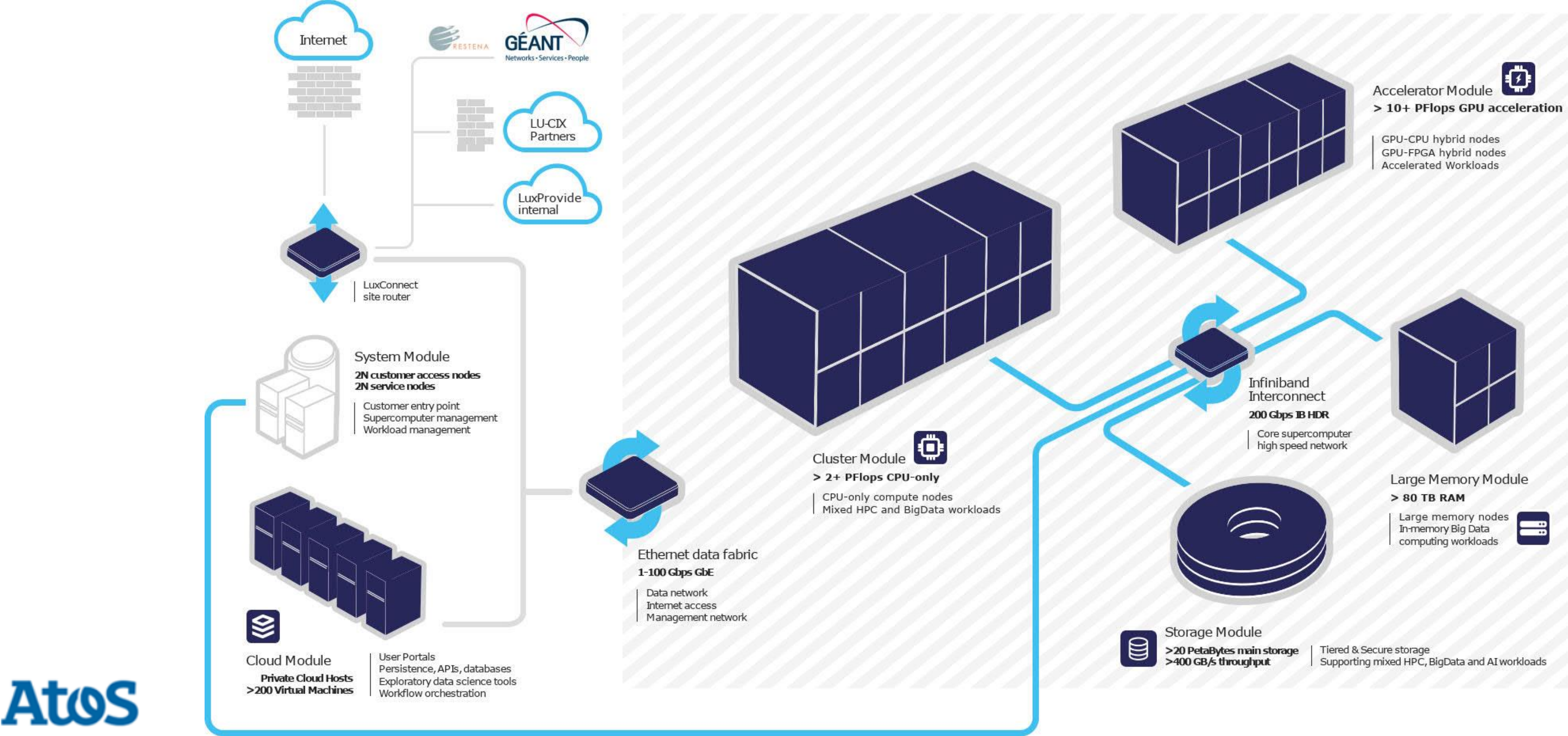


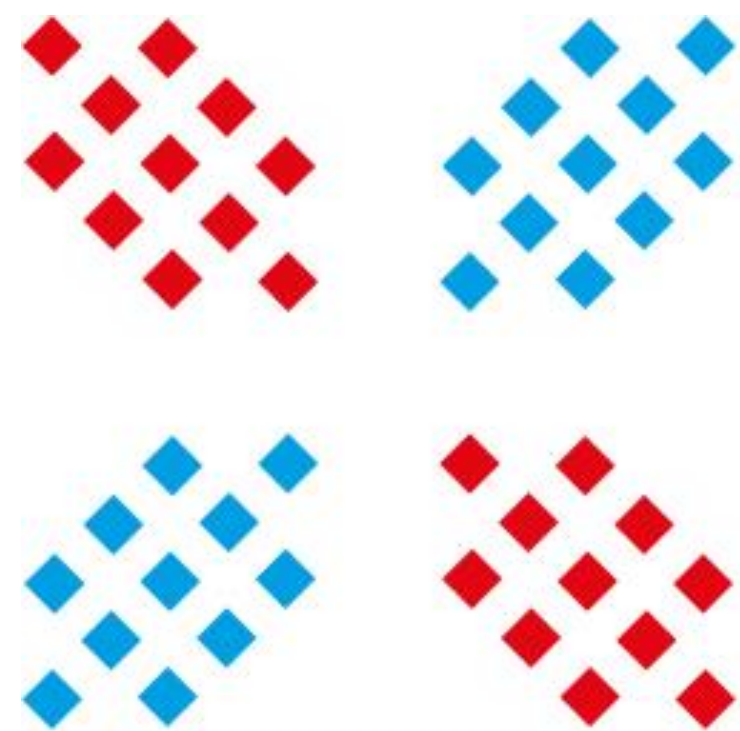
MeluXina, a Cornerstone for Digital Lëtzebuerg

- Focus on **INDUSTRY** and especially **SME**'s and **RESEARCH**
- One-stop shop with **EASY** and **USER-FRIENDLY** access to HPC/HPDA capacities and competencies



MeluXina, Modular Supercomputer Architecture





MELUXINA

HIGH PERFORMANCE
COMPUTING IN LUXEMBOURG

